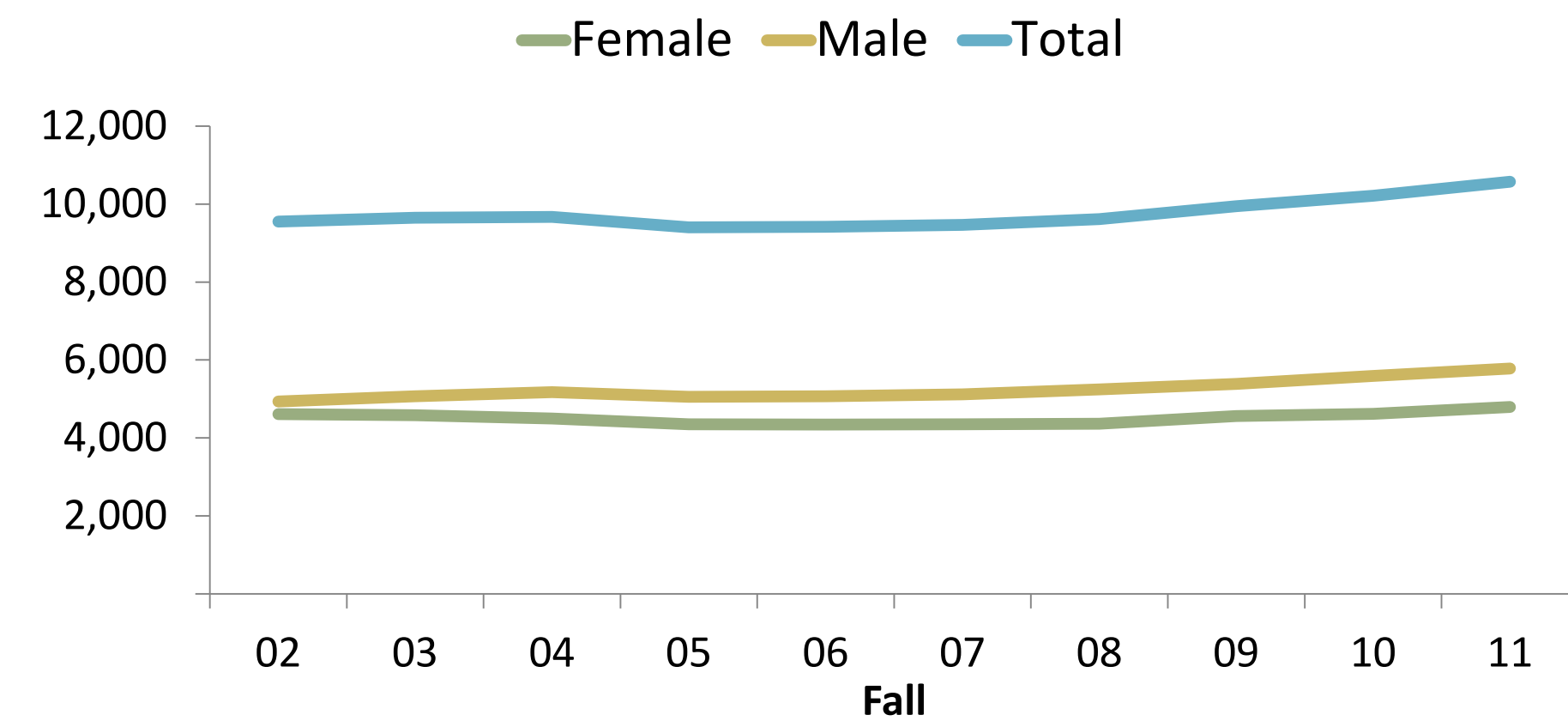
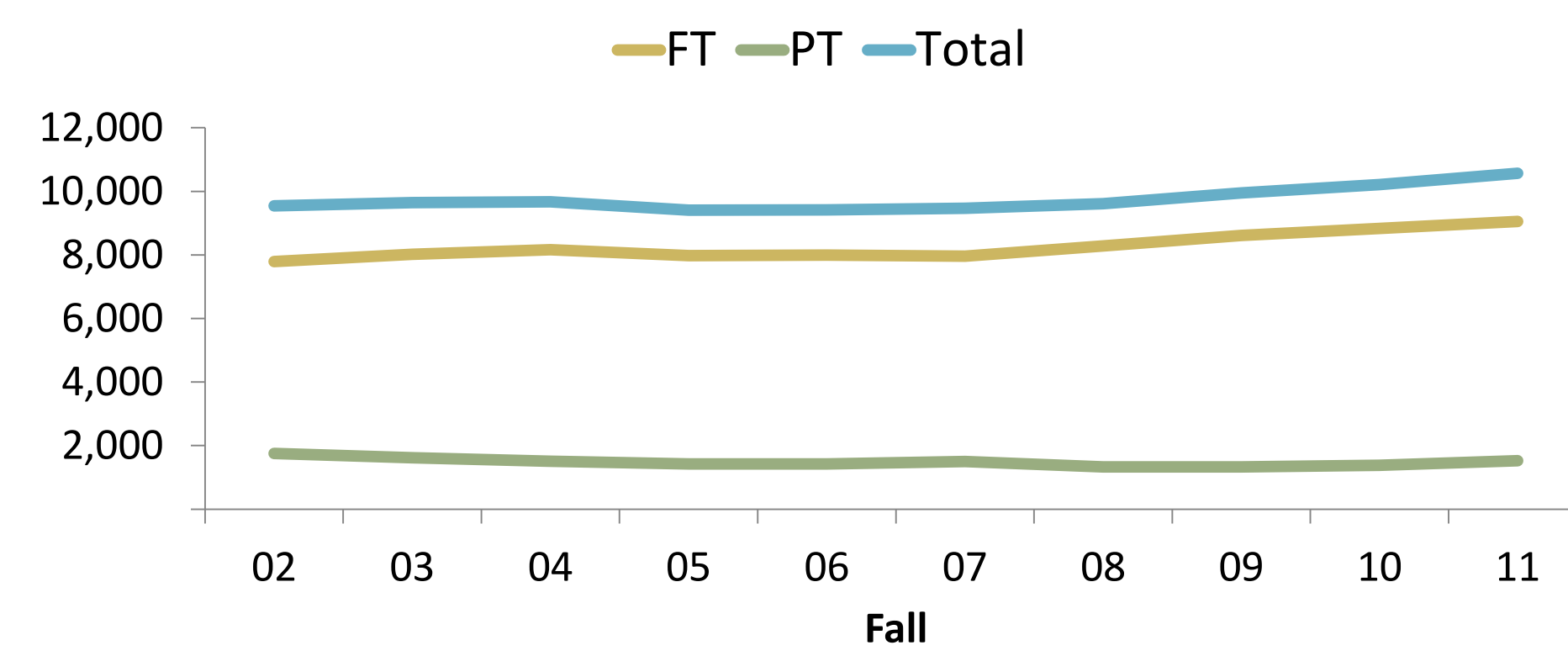


# UMBC UNDERGRADUATES...

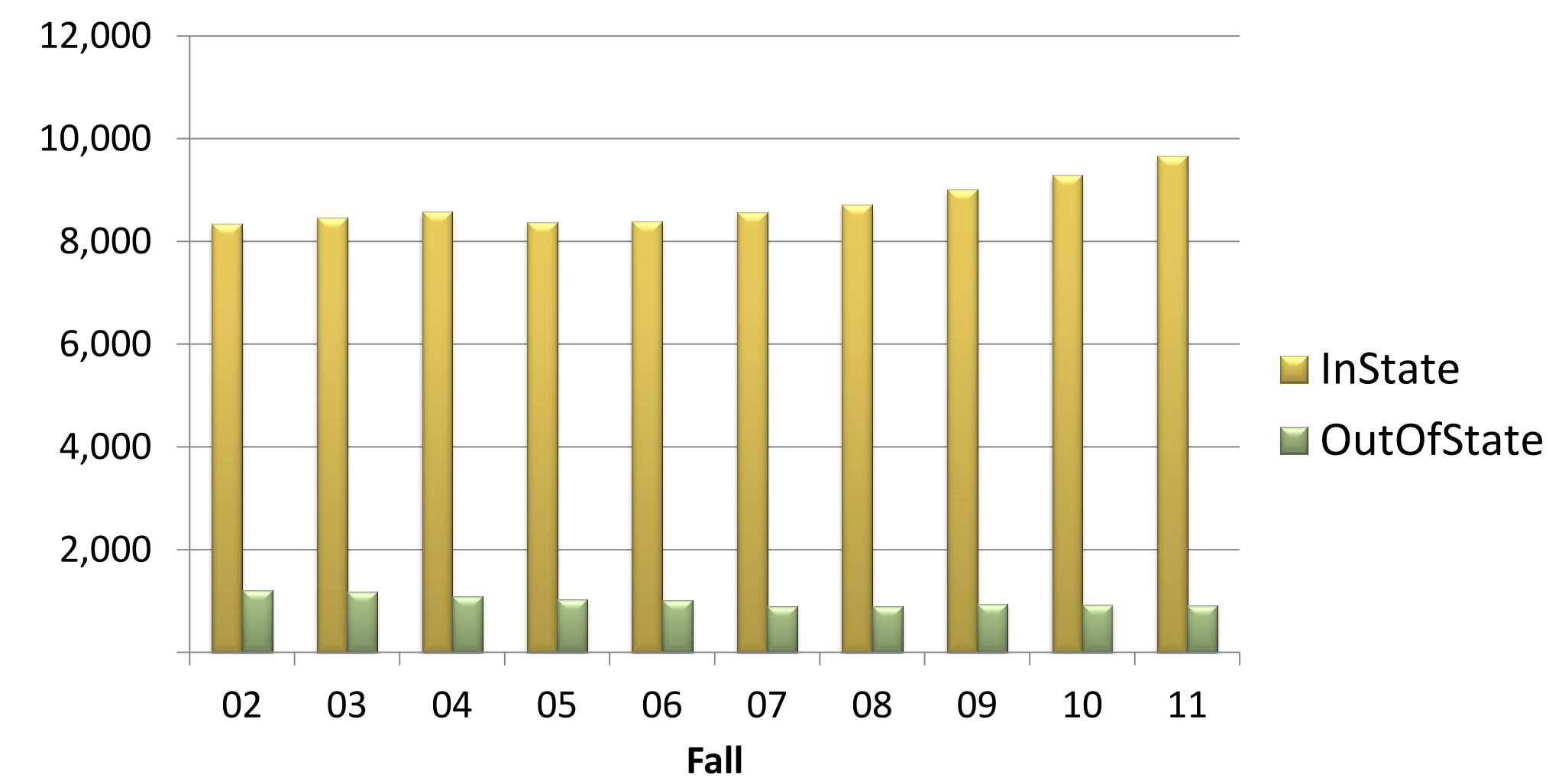
### Enrollment by Gender



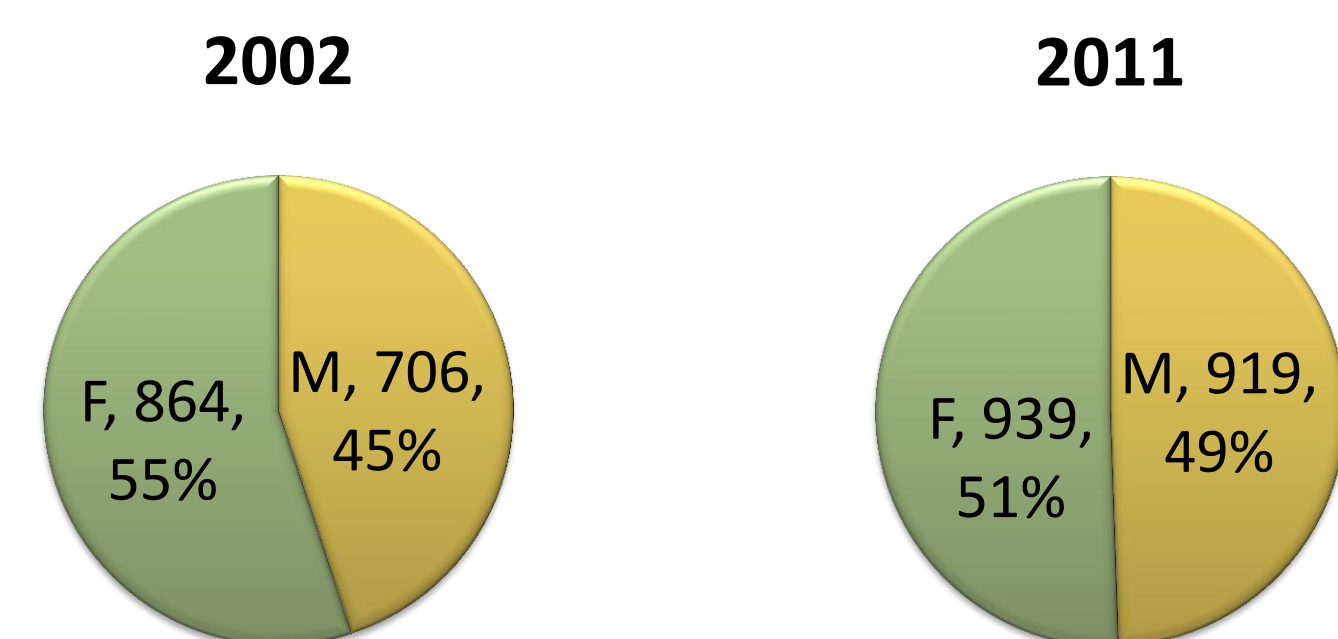
### Enrollment by Full-Time/ Part-Time Tuition Status



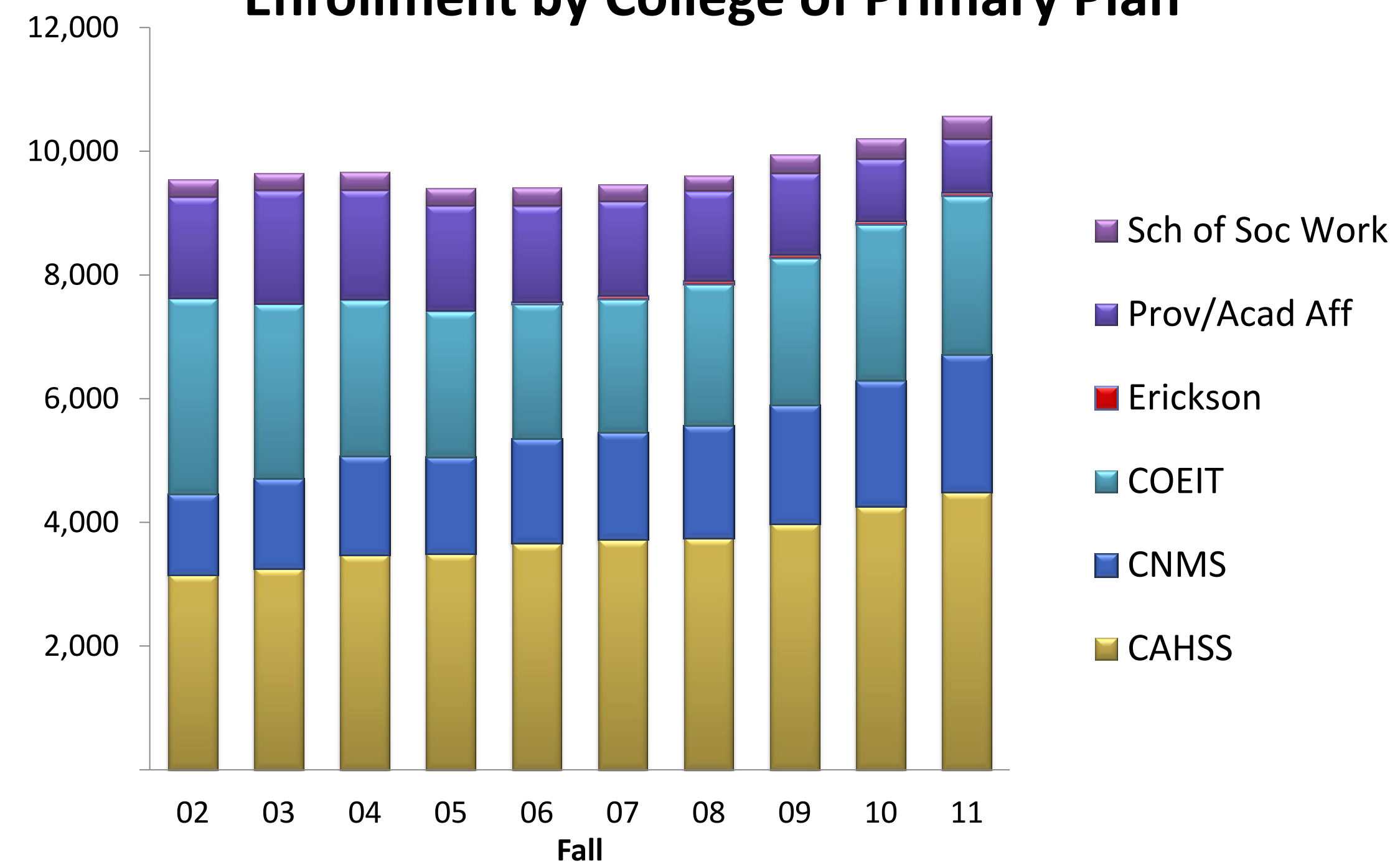
### Enrollment by Tuition Residency Status



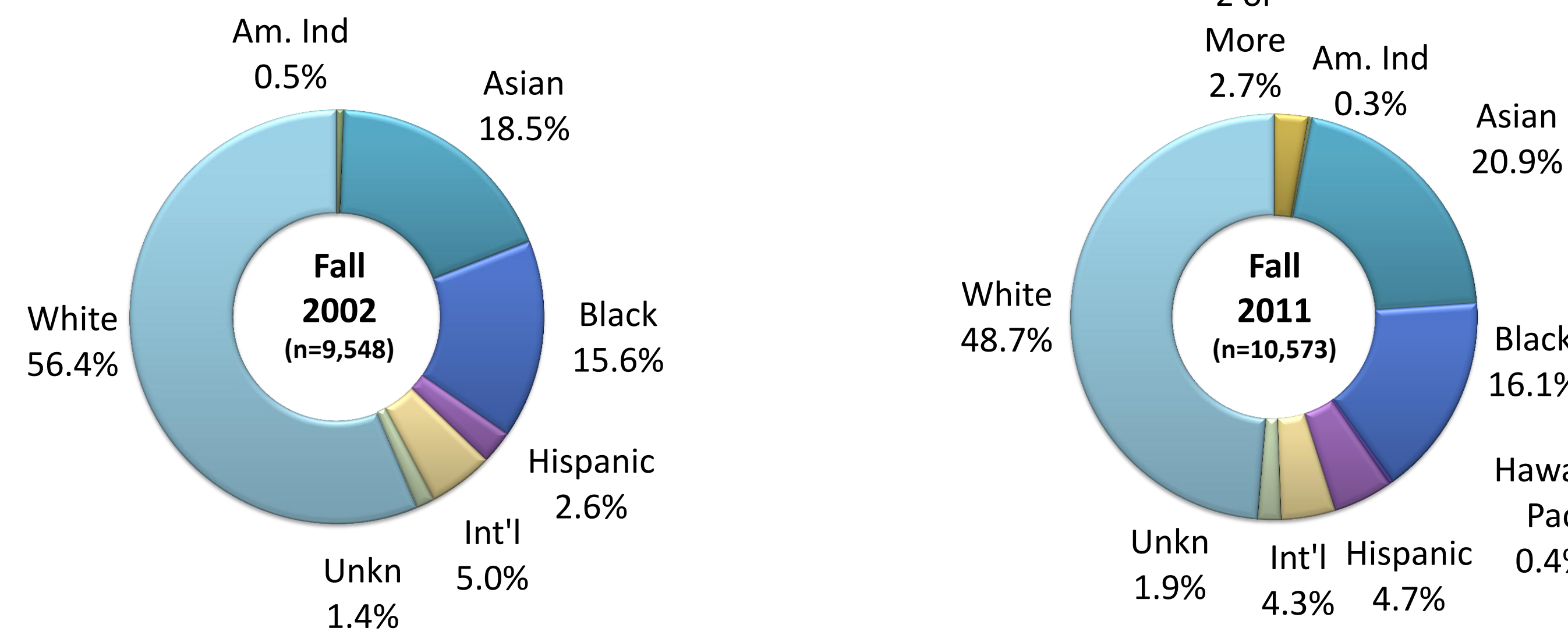
### Bachelor's Degree Recipients by Gender



### Enrollment by College of Primary Plan



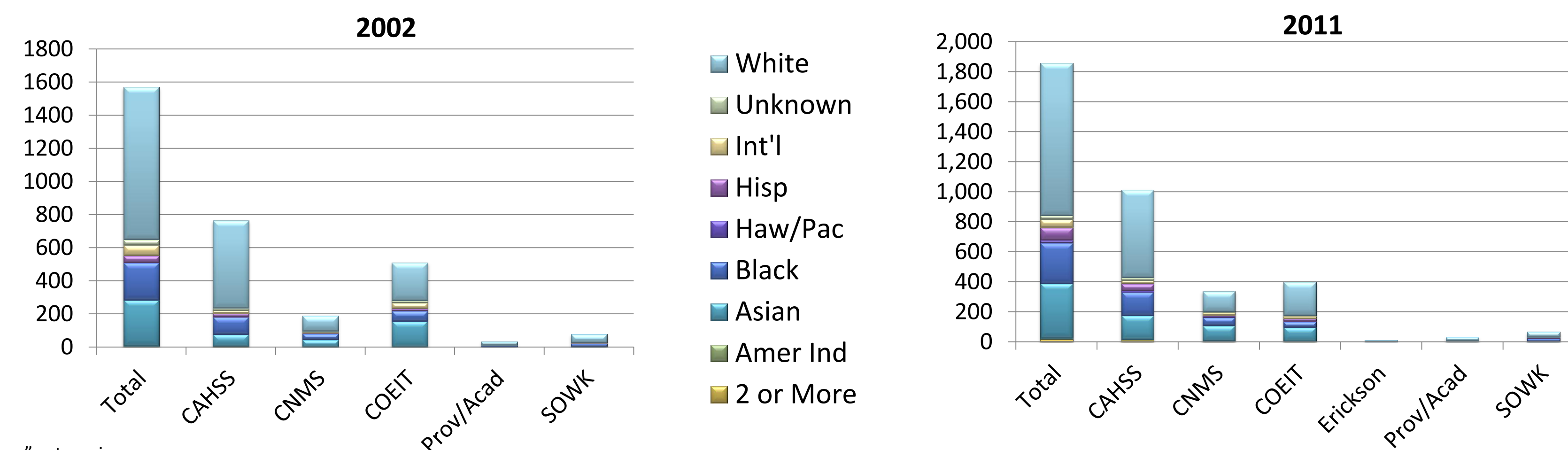
### Enrollment by Race/Ethnicity\*



### Bachelor's Degrees Awarded by College

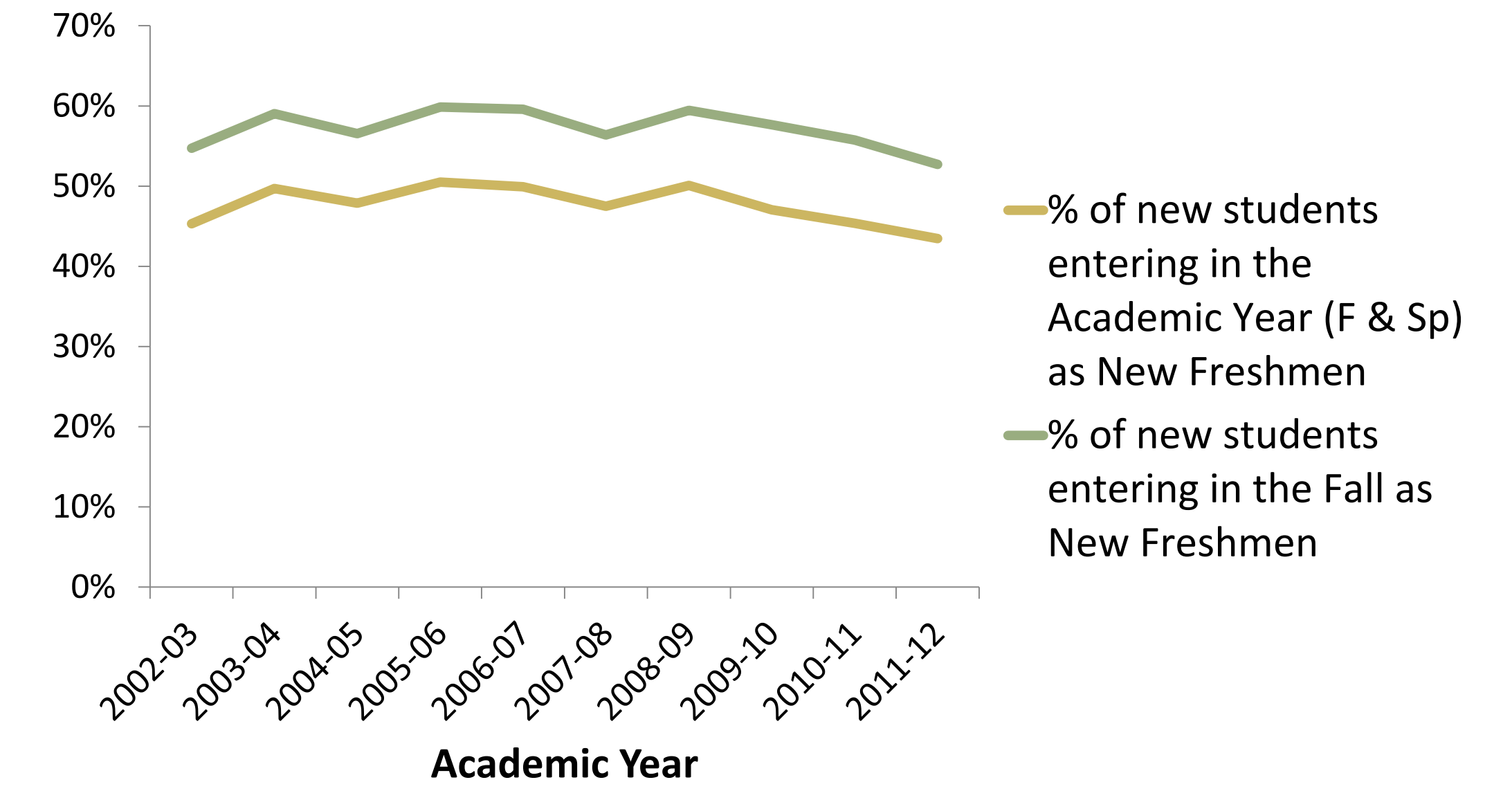
	2002	2003	2004	2005	2006	2007	2008	2009	2010	2011
CAHSS	763	818	840	910	921	971	985	1,034	1,066	1,047
CNMS	187	206	215	262	259	355	305	299	340	343
COEIT	510	589	560	549	453	471	432	377	409	402
Erickson								10	12	12
Prov/Acad	33	34	23	26	16	28	35	19	32	34
SOWK	77	83	70	72	72	89	88	60	56	67
<b>Total</b>	<b>1,570</b>	<b>1,730</b>	<b>1,708</b>	<b>1,819</b>	<b>1,721</b>	<b>1,914</b>	<b>1,845</b>	<b>1,799</b>	<b>1,915</b>	<b>1,905</b>

### Bachelor's Degree Recipients by Race/Ethnicity\* & College

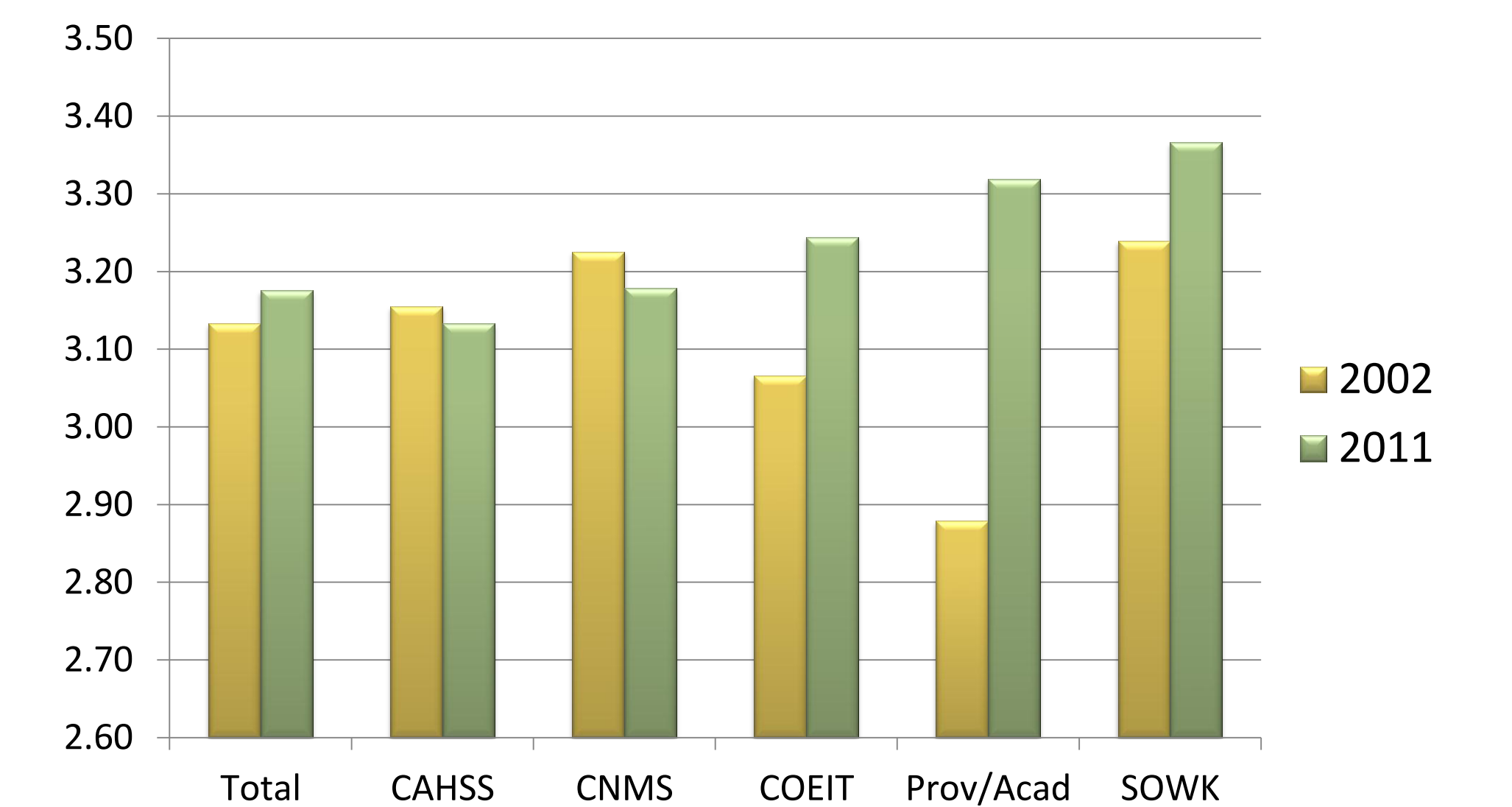


# ...BY THE NUMBERS

### Mix of New Freshmen & New Transfers Over Time

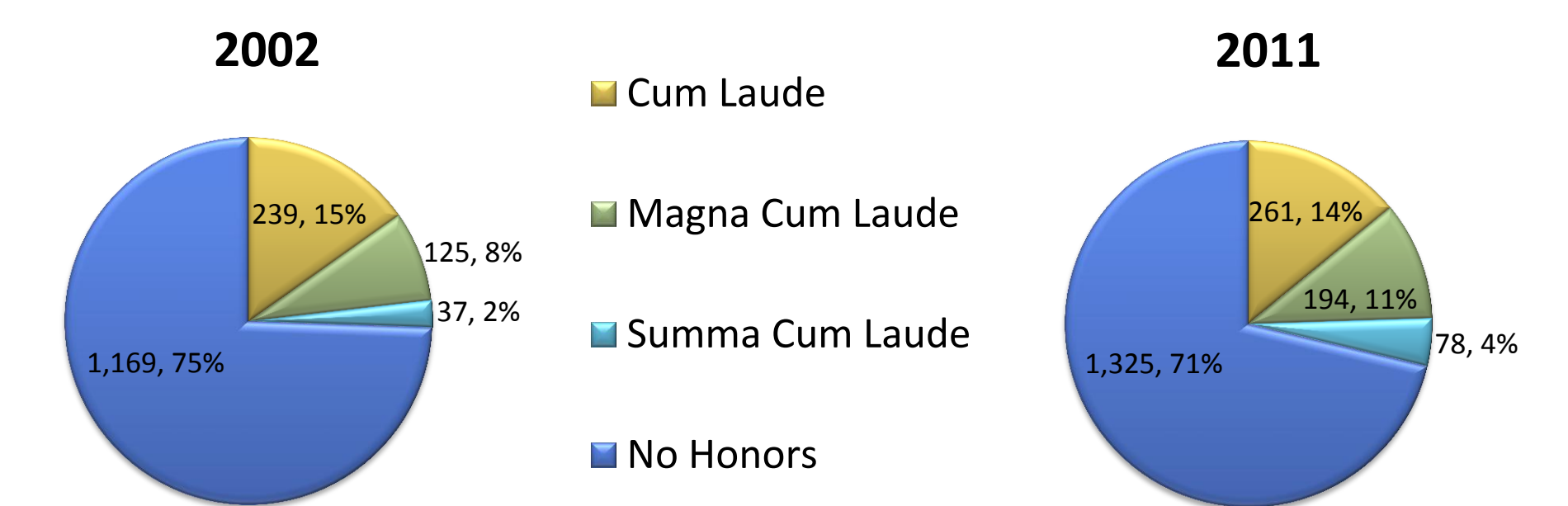


### Average Cumulative GPA of Bachelor's Degree Recipients: Overall and by College



Note: The average cumulative GPA for Erickson School bachelor's degree recipients in 2011 was 3.31

### Academic Honors of Bachelor's Degree Recipients



\*Beginning in Fall 2010, federal changes in reporting of race/ethnicity resulted in the addition of "Hawaiian/ Pacific Islander", and "2 or More" categories.