



# First GBM

Fall 2015

September 9th, 2015

# Meet Eboard!

## President



1. ChemE, major biology
2. Mona Patel
3. Uneven nostrils
4. 3rd year

## Service Chair/Outreach



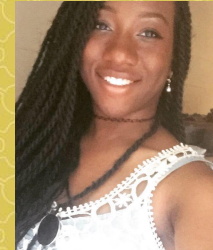
1. ChemE
2. Sav Stein
3. I run with one leg
4. Soph, Enviro Track

## Vice President



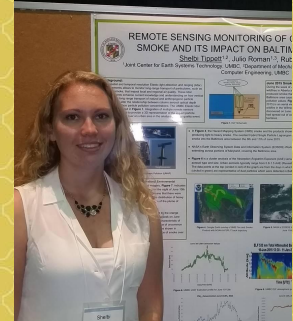
1. ChemE
2. Elizabeth Tan
3. Play Field Hockey
4. 3rd year, Bio Track

## Secretary



1. MechE
2. Demi oXWSWE
3. I like pizza
4. Nick Jr.

## Treasurer



1. MechE
2. Shelbi Tippet
3. Work on campus with JCET.
4. 2nd year

# Social Media



#LikeAGirl



#ILookLikeAnEngineer

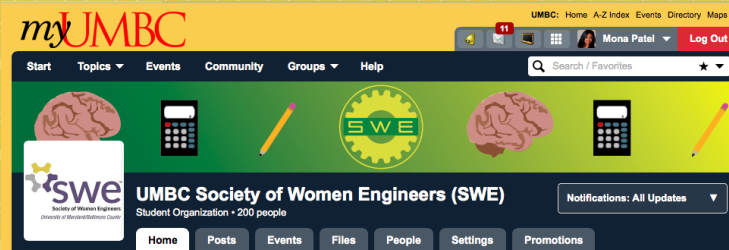
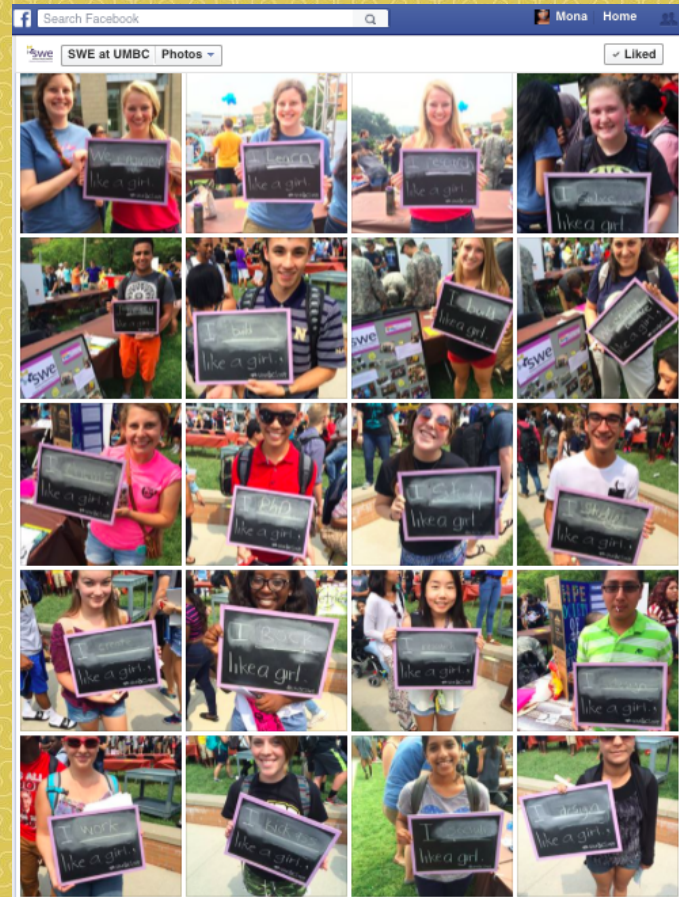
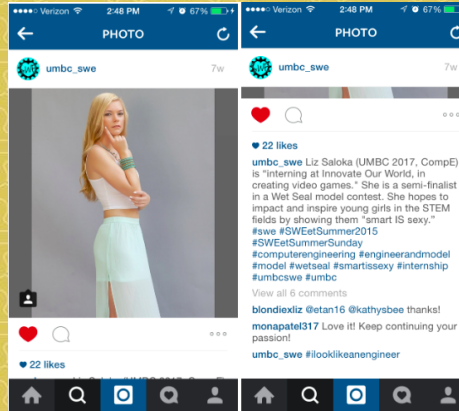
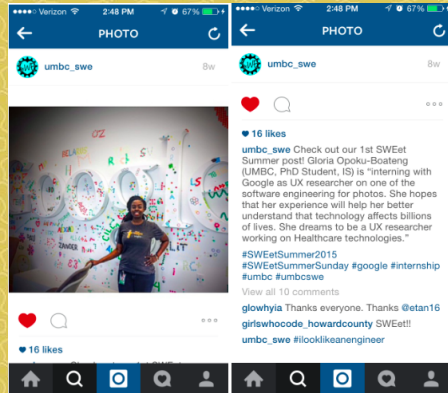
# FOLLOW US!!!

myUMBC: <http://my.umbc.edu/groups/swe>

Facebook: SWE at UMBC

Instagram: @umbc\_swe

Twitter: @umbc\_swe





1. Major
2. Name
3. Fun Fact
4. Year/Track



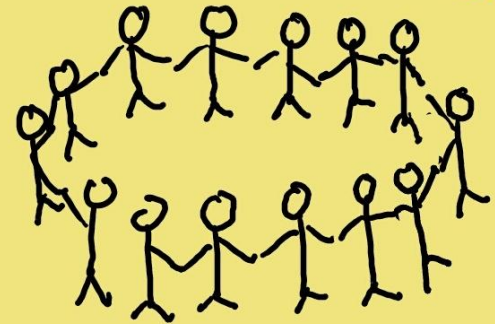
CompE/CompSci  
VS.  
ChemE  
vs.  
MechE  
vs.  
Other



er... er...



hooray!



# SWE Collegiate Membership

## SWE membership

- Scholarships, Career center, Conferences, networking
- Types:
  - Collegiate to career: \$50 (one-time fee)
  - Collegiate: \$20/year



# SWE National Conference

## “World’s Largest Conference for Women Engineers”

<http://we15.swe.org/>

- Nashville, TN
- Oct. 22-24
- SWE Baltimore/Washington Professional- 100\$ Bus Trip
- Early (before 9/25): \$90 (Collegiate member) /\$125 (non-collegiate member)
- Conferences, career fair, networking, volunteering/outreach events
- Funding is available



# UMBC SWE Membership

- Accountability
  - Earn the right to use SWE's name
- Points System
  - Attending a meeting: 1 pt
  - Sharing on Social Media: 1 pt
  - Outreach Attendance: 3 pts
- 5 pts: right to use SWE on official documentation
- Official SWE membership is not mandatory, just put in the work!

# Freshman Representative

- Responsibilities:
  - Represent the Freshmen class
  - Announce upcoming events to Freshmen class
  - Assist Service Chair with activities/planning
  - Shadow E-board members
- Application opens 9/9 until 9/25

# Big/Little Mentorship

- Get to know your Big/Little
  - Tips/Advice (Study, Class, Professor, etc)
  - Food
- Big/Little events
- Application opens until 9/25



# Outreach events

- *Aspire to Lead - 9/19*

“latest trends in female leadership and perception. Topics include bestsellers Lean In by Sheryl Sandberg, Positions of Power by Amy Cuddy, and Give and Take by Adam Grant. The format includes interactive sessions, networking, a Ted Talk and more. Breakfast, Lunch, gift bag, door prize included.”

- 8:30am-1pm
- \$5 per student
- RSVP by 9/11

- *REACH Volunteering*

An interactive workshop to encourage girls to be interested in STEM and to help them understand how it what they learn in school is applicable to the real world. Featuring demonstrations, guest speakers and discussions.

Workshop - \*10/3

- 9am-12pm



- *FIRST Lego League Internship*

- Tues or Wed @3:30-5:30pm
- Transportation provided
- Stipend
- [mhaque3@umbc.edu](mailto:mhaque3@umbc.edu)



# Miss America 2014- Nina Davuluri

- Committee....
  - Sign-up if you are interested
  - monpat1@umbc.edu
- March 3, 2016 (March is Women's History Month!)
- Julie Ross - first female Dean of the Engineering School.



# Upcoming Events...

- 9/11 Tau Beta Pi Cookout @4-7pm Walker Apt volleyball side
- 9/16 Bake Sale in the Breezeway @11:30am-1:30pm
- 9/19 *Aspire to Lead* (off-campus)
- 9/26 Professional Development - Exelon @12pm M/P106