

How to Access Additional REX Reports

Beyond the Student Administrative Reports accessible directly from myUMBC, there are additional reports available to some users. In the current version there was not a consistent way to access these reports. In the new version access to these reports has been standardized using the same access method as the Student Administrative Reports. Once you navigate to the Student Administrative Reports, you will see a new selection, Additional Reports, at the end of the list. In addition, you will see a new selection at the top of the page to access official reports from Institutional Research. See the highlighted sections in the image on the next page.

Report Exchange (REX)

Documents /

Student Administration Reports

Edit

These reports reflect the prior day's information from the Student Administration (SA) system. The data are not official. Reports may include headcount and registration of students not included in official reports.

For REX reports with OFFICIAL numbers look in the Institutional Research folder. The Office of Institutional Research's web site still contains the same Databook tables and other official reporting.

[Detailed Overview of Reports](#)

[Viewing Administrative Reports](#)

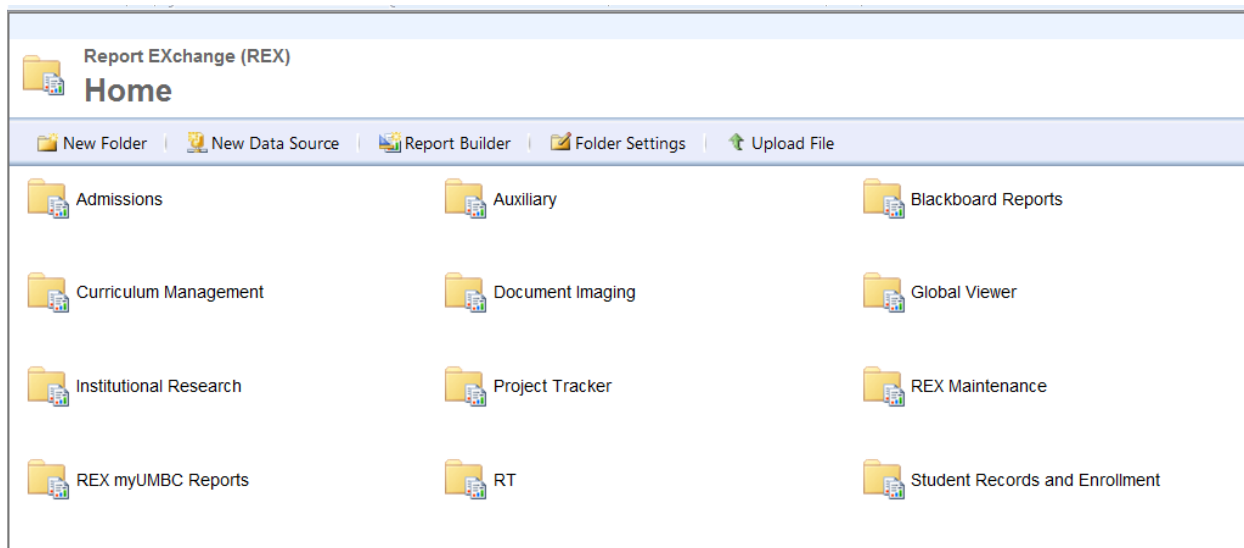
These reports work best with Internet Explorer 7 or greater. [Download Now](#)

- [Class Section Utilization](#)
Provides enrollment and capacity totals by section
- [Class Section Utilization \(Combined Sections\)](#)
Provides enrollment and capacity totals for combined sections
- [Student Enrollment by Plan](#)
Provides a list of students by plan
- [Advising Clearance by Advisor](#)
Provides a list of students cleared/authorized to register
- [Class Permissions by Authorizer](#)
Provides a list of students granted class permissions
- [Class Permissions by Student](#)
Provides a list of class permissions granted to a student
- [Admitted Students by Plan \(Ugrad\)](#)
Provides a list of newly admitted freshmen and transfer students
- [Advising and Registration Status by Plan](#)
Provides users with information about the status of advised and registered students within a given department
- [Graduation Application Status](#)
Provides a list of students by graduation application status
- [Student Course Enrollment by Plan](#)
Provides detailed information about students' current and past course enrollment [more](#)
- [Classroom Occupancy](#)
Provides a grid of rooms and times and the room occupancy during the time slots [more](#)
- [Available Classrooms By Standard Meeting Pattern](#)
Provides a list of available rooms based on the Standard Meeting Patterns and Buildings selected [more](#)
- [Additional Reports](#)
Additional REX reports

What do you love or hate about myUMBC?

Send us Feedback

After selecting the link you will be brought to the Report EXchange (REX) home page.



Depending on the reports you have access to, the available folders will vary.

To provide more standardization to the location of reports, the organization of the reports has been redesigned. To assist with locating reports, you can use the [REX Reports Location](#) document.