

Permaculture Design Project

The Garden



What is permaculture?

We don't plant plants..We plant Ecosystems!

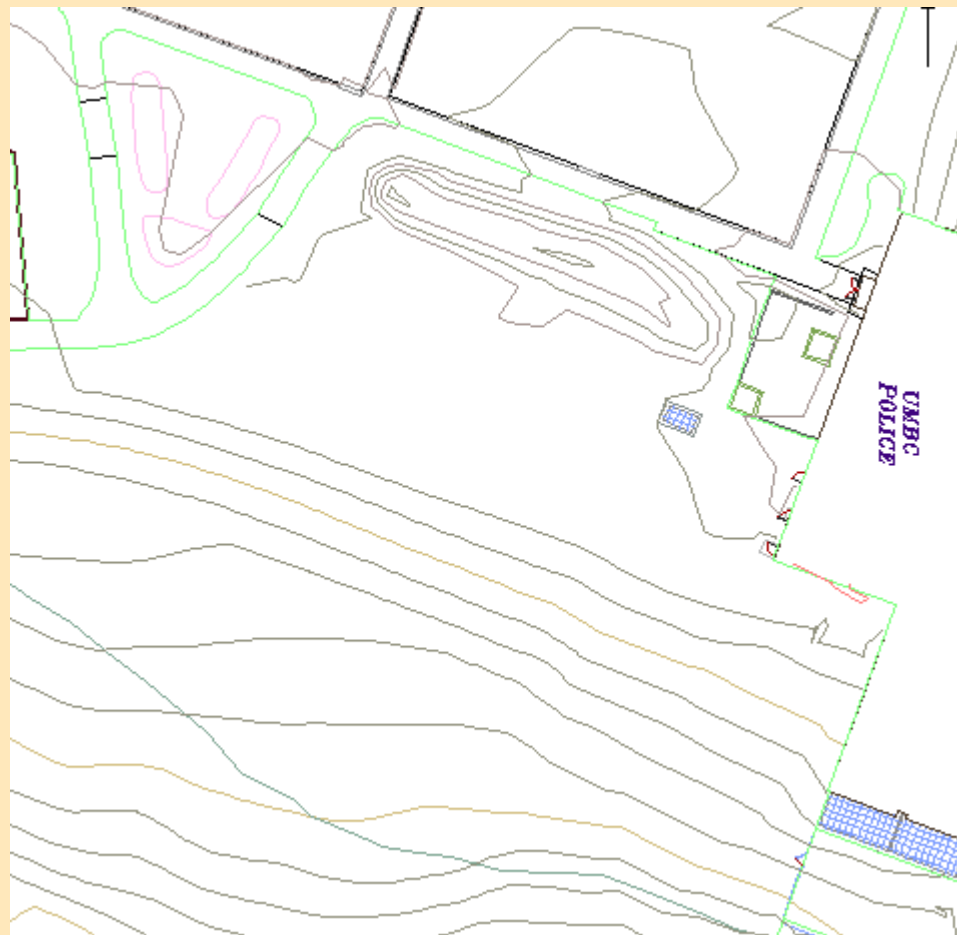
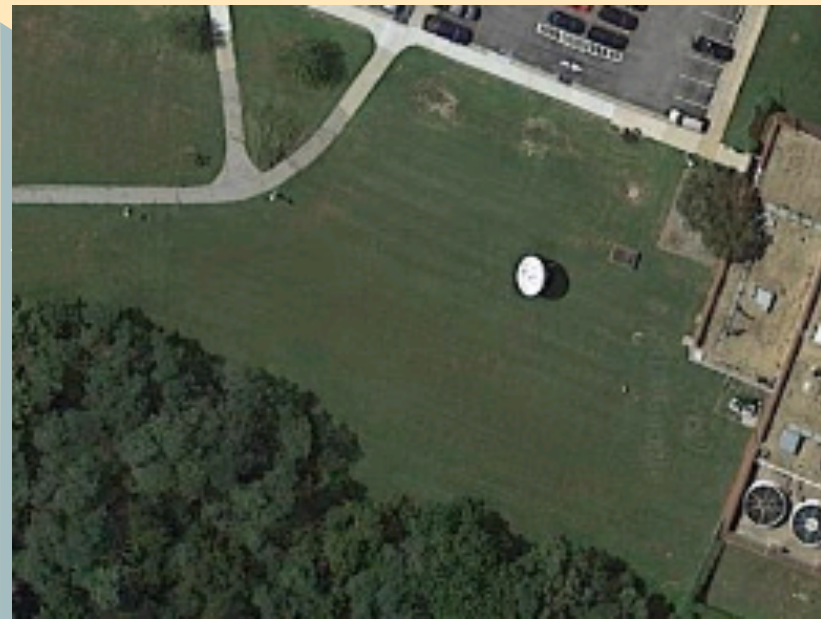
Permaculture= Permanent-Agriculture

“Meeting human needs while increasing ecosystem health.”

“We are nature working!”

Permaculture is a branch of ecological design, ecological engineering, environmental design, construction and integrated water resources management that develops sustainable architecture, **Regenerative** and **Self Maintained** habitat and agricultural systems modeled from natural ecosystems.

The space...



Implementation

- Sheet mulching
 - layering organic matter in a carbon-nitrogen ratio (30 to 1)
 - cardboard, newspaper, leaves, compost
- Observe and interact from November through spring prior to planting

Gardens and Guilds

Climate Garden

- Project Budburst: nationwide, “citizen science” effort to monitor the progressive effect of climate change
- Budburst is run by NEON (the National Ecological Observatory Network), an NSF (National Science Foundation) funded organization, and the Chicago Botanic Garden
- They are planting a range of species to monitor how bloomtime and migratory pollinators interact with the space.
- These specific plants are used among our garden members already.

Food Forest

- Modeled off of observed interactions in natural ecosystems
- It will produce food, fuel, medicine, and much more.
- Polycultures: communities of plants, animals, and fungi designed for functional interaction, each having 3 or more contributions to the system
- Plants support one another, ie. nitrogen fixers, dynamic accumulators, and beneficial pollinators in proximity to one another

Partners - On and Off Campus

- Donna Anderson and Phil Cho
- Jill Wrigley, Interdisciplinary Studies
- MD Master Gardeners - Grow It, Eat It
- Eric Brown, Interdisciplinary Studies
- Interdisciplinary Studies Living-Learning Community
- Dr. Maggie Holland, Geography and Environmental Systems
- Environmental Task Force (a student organization)
- Baltimore Orchard Project
- Blue Water Baltimore, Herring Run Nursery
- Finger Lakes Permaculture Institute
 - Steven Gabriel (Dominic's mentor)
- Greg Strella, Great Kids Farm
- Jason Reed, Filbert Street Garden