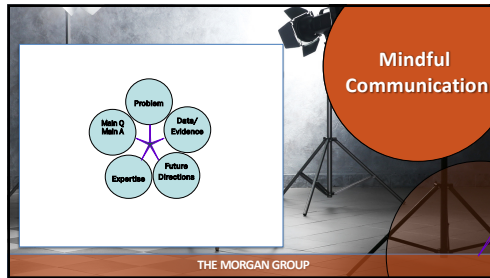
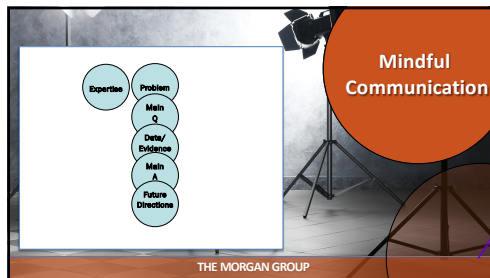


1



2



3

- Larger relevance (part 1)
- Your specialty/personal connection
- Single question (!)
- Brief concept/method/data*
- Three-five major points
- Take Home Message
- One future study
- Relevance (part 2)

THE MORGAN GROUP

4

Relevance
Specialty*
Single Question

3-5 major points
Take-Home -
Message

Future Step
Relevance Part 2

Hour Glass
Format

THE MORGAN GROUP

5

What I want to find out, is after continued exposure to low level antibiotics, can these organisms evolve full resistance?

Ryan Johnson

Main Question

THE MORGAN GROUP

6

How can we achieve both modularity and versatility in a standard platform?

Esther Sim

THE MORGAN GROUP

Main Question

7

What is the relationship between a polygenic score for general cognition and brain activation?

Kaela Kuitchoua

THE MORGAN GROUP

Main Question

8

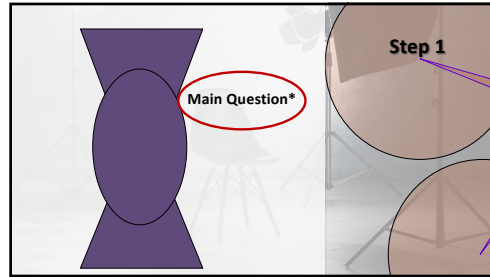
How can we better learn the gender of words in a language system?

Mirela Toda Cosi

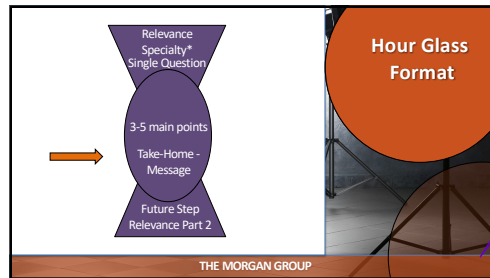
THE MORGAN GROUP

Main Question

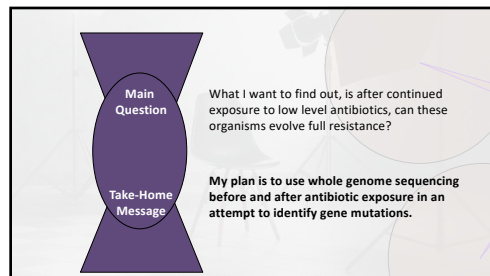
9



10



11



12

Main Question How can we achieve both modularity and versatility in a standard platform?

Take-Home Message Our 3D model both validates the platform and the process for drug screening.

13

Main Question What is the relationship between brain activation and a polygenic score for general cognition in schizophrenia?

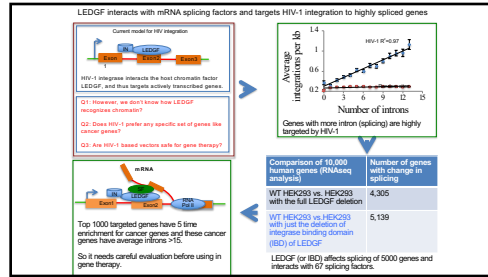
Take-Home Message There is a moderate positive relationship between a polygenic score and brain activation of 8%.

14

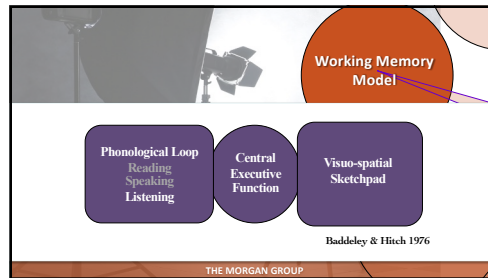
Take-Home-Message

Step 2

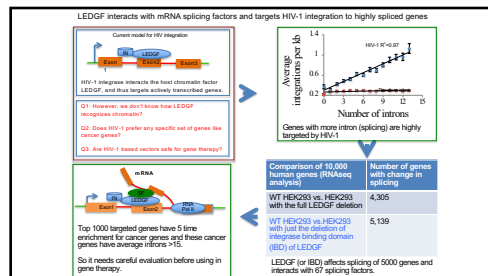
15



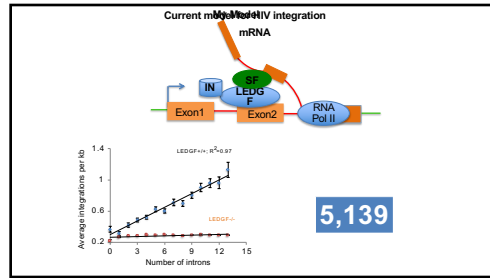
16



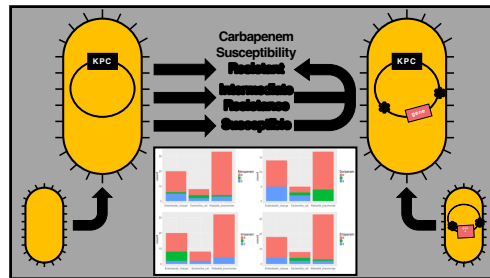
17



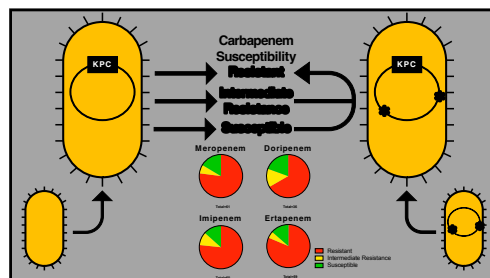
18



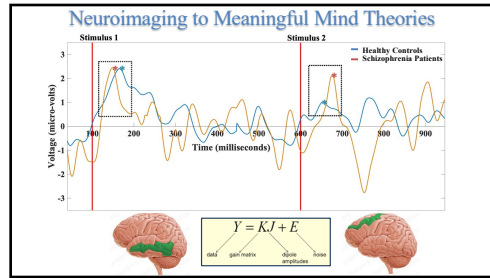
19



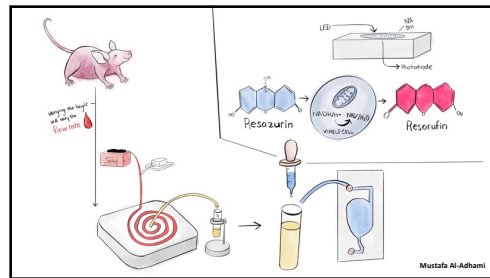
20



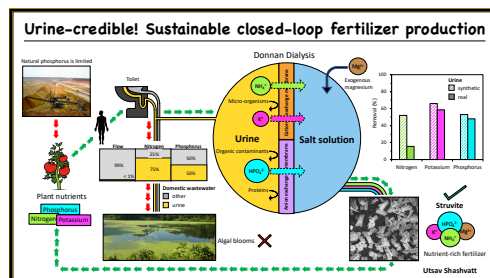
21



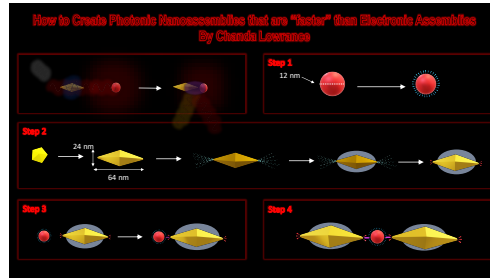
25



26



27



28

Why Knowing Healthy Controls Matters for Research

| Test Data | Ref | Pts | % Ref |
|-----------------|------|------|-------|
| FVC Liters | 2.97 | 2.75 | 93 |
| FEV1 Liters | 2.31 | 2.13 | 92 |
| FEV1/FVC % | 79 | 77 | 96 |
| FEV3 Liters | 2.89 | 2.83 | 100 |
| FEF25-75% L/sec | 1.51 | 1.97 | 71 |
| PEF L/sec | 5.87 | 4.19 | 71 |
| MVV L/min | 77 | 59 | 78 |

| Test Data | Ref | Pts | % Ref |
|-----------------|------|------|-------|
| FVC Liters | 3.63 | 2.75 | 78 |
| FEV1 Liters | 2.77 | 2.13 | 77 |
| FEV1/FVC % | 77 | 77 | 100 |
| FEV3 Liters | 3.35 | 2.83 | 88 |
| FEF25-75% L/sec | 2.75 | 1.97 | 72 |
| PEF L/sec | 7.71 | 4.19 | 54 |
| MVV L/min | 113 | 59 | 52 |

30

Why knowing healthy controls matters

Summary

Introduction

Discussion

Conclusion

References

31

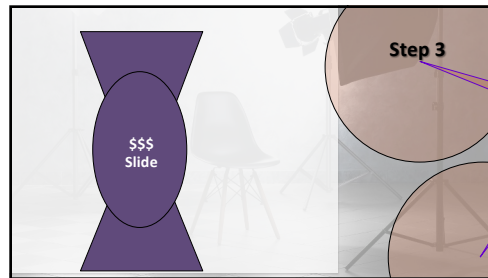
2 of 2 | WILEY-CLINICAL PRACTICE

Name: [Redacted] Gender: Female Race: Caucasian Age: 79 Height(m): 69 Weight(kg): 175

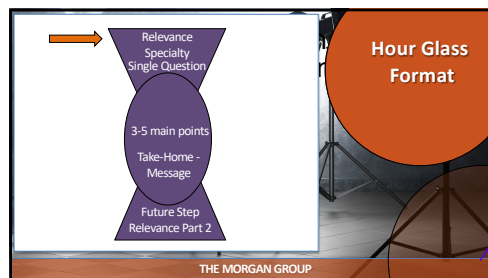
Name: [Redacted] Gender: Male Race: Caucasian Age: 79 Height(m): 69 Weight(kg): 175

| Test Data | Ref | Pre | % Ref | Test Data | Ref | Pre | % Ref |
|-------------------|------|------|-------|-------------------|------|------|-------|
| FVC (Liters) | 2.67 | 2.75 | 93 | FVC (Liters) | 3.63 | 2.75 | 78 |
| FEV1 (Liters) | 2.31 | 2.18 | 92 | FEV1 (Liters) | 2.77 | 2.13 | 77 |
| FEV1/FVC (%) | 79 | 77 | — | FEV1/FVC (%) | 77 | 77 | — |
| FEV3 (Liters) | 2.69 | 2.50 | 96 | FEV3 (Liters) | 3.58 | 2.50 | 78 |
| FEF25-75% (L/sec) | 1.51 | 1.97 | 130 | FEF25-75% (L/sec) | 2.78 | 1.97 | 92 |
| PEF (L/min) | 5.97 | 4.16 | 71 | PEF (L/min) | 7.71 | 4.16 | 64 |
| MVV (L/min) | 77 | 59 | 76 | MVV (L/min) | 113 | 59 | 82 |

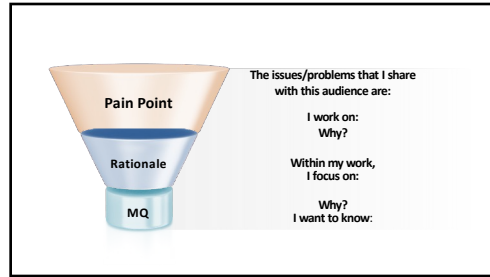
32



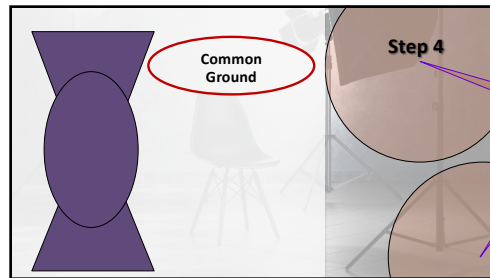
33



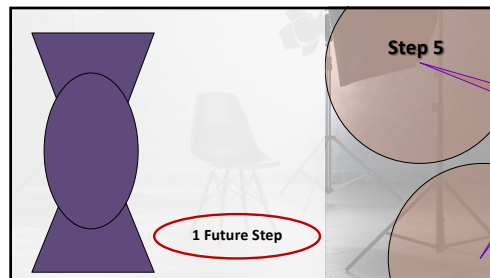
34



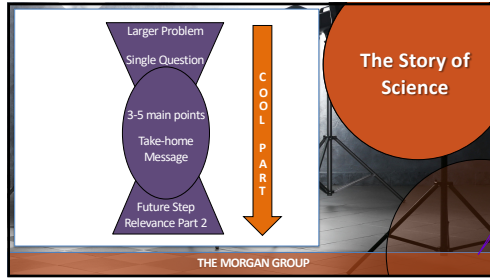
35



36



37



38

39

40
