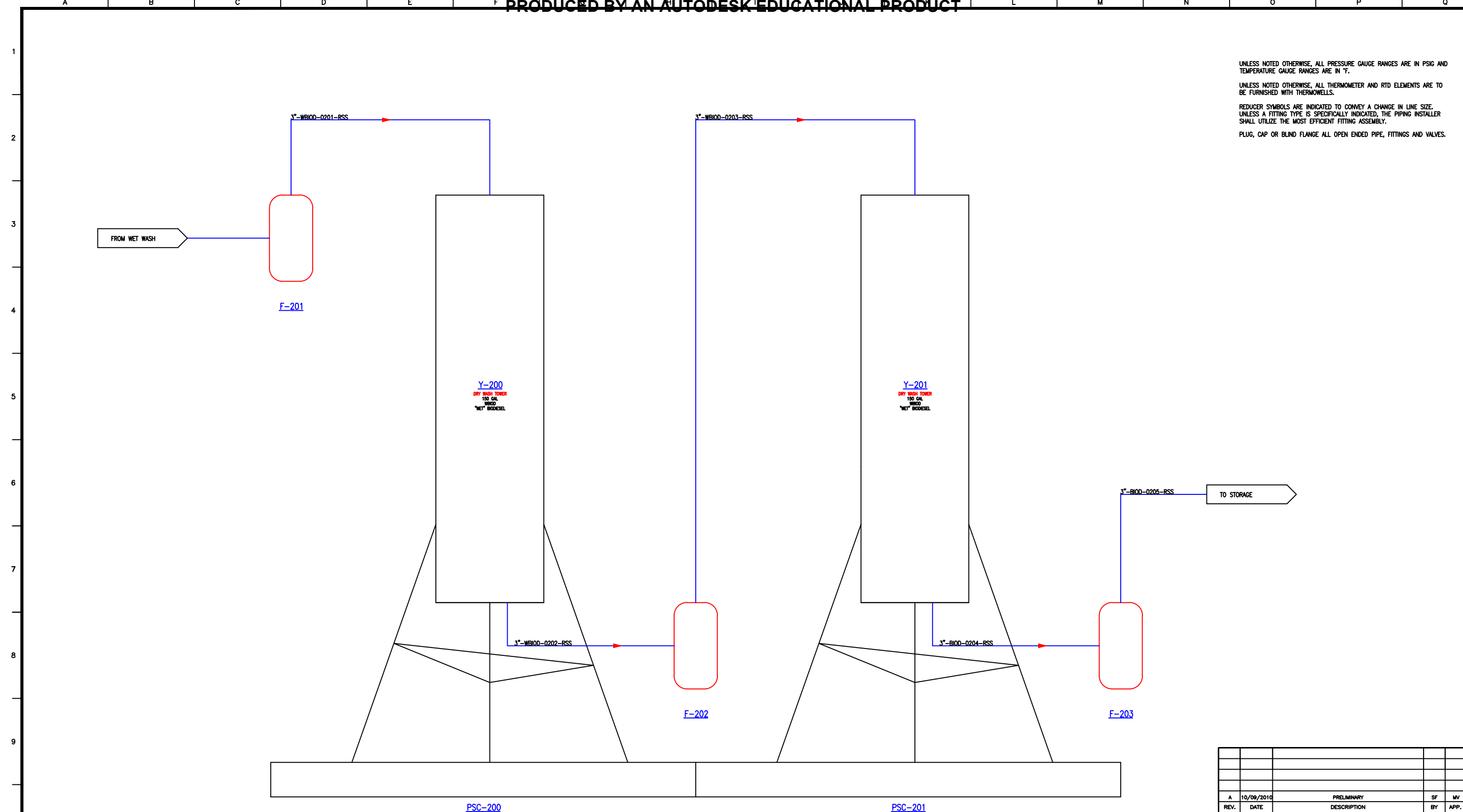


PRODUCED BY AN AUTODESK EDUCATIONAL PRODUCT

PRODUCED BY AN AUTODESK EDUCATIONAL PRODUCT

UNLESS NOTED OTHERWISE, ALL PRESSURE GAUGE RANGES ARE IN PSIG AND TEMPERATURE GAUGE RANGES ARE IN °F.  
 UNLESS NOTED OTHERWISE, ALL THERMOMETER AND RTD ELEMENTS ARE TO BE FURNISHED WITH THERMOWELLS.  
 REDUCER SYMBOLS ARE INDICATED TO CONVEY A CHANGE IN LINE SIZE. UNLESS A FITTING TYPE IS SPECIFICALLY INDICATED, THE PIPING INSTALLER SHALL UTILIZE THE MOST EFFICIENT FITTING ASSEMBLY.  
 PLUG, CAP OR BLIND FLANGE ALL OPEN ENDED PIPE, FITTINGS AND VALVES.



Y-200	Y-201	F-201	F-202	F-203	PSC-200	PSC-201
ITEM: DRY WASH TOWER	ITEM: DRY WASH TOWER	ITEM: DRY WASH FILTER	ITEM: DRY WASH FILTER	ITEM: DRY WASH FILTER	ITEM: DRY WASH TOWER	ITEM: DRY WASH TOWER
CAPACITY: 30 GAL	CAPACITY: 150 GAL	TYPE: ---	TYPE: ---	TYPE: ---	CAPACITY: 66 GAL	CAPACITY: 66 GAL
DIAMETER: 6"	DIAMETER: 6"	SIZE: ---	SIZE: ---	SIZE: ---	DIAMETER: ---	DIAMETER: ---
HEIGHT: ---	HEIGHT: ---	CAPACITY: 9 GAL/HR	CAPACITY: 9 GAL/HR	CAPACITY: 9 GAL/HR	HEIGHT: ---	HEIGHT: ---
DESIGN TEMP.: ---	DESIGN TEMP.: ---	DIFF. PRESS.: ---	DIFF. PRESS.: ---	DIFF. PRESS.: ---	DESIGN TEMP.: ---	DESIGN TEMP.: ---
DESIGN PRESS.: ---	DESIGN PRESS.: ---	MATERIAL: ---	MATERIAL: ---	MATERIAL: ---	DESIGN PRESS.: ---	DESIGN PRESS.: ---
MAT'L: MDP	MAT'L: MDP				MAT'L: SS	MAT'L: SS

REV.	DATE	DESCRIPTION	BY	APP.
A	10/09/2010	PRELIMINARY	SF	MV
REVISIONS				
BIODEISEL PLANT PIPING AND INSTRUMENTATION DIAGRAM DRY WASH				
REVISED BY:	N/A	TIMOTHY_PATERNITI		
DATE:	11/05/2010			
		DRAWING NO.	SHEET NO.	REV.
		003	1	1